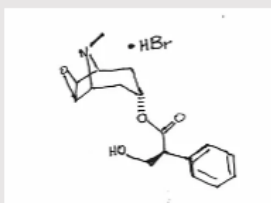


Phytex is continually innovating to expand its specialised product portfolio. With new techniques and alternative uses for natural product APIs being discovered every day, we work with customers on novel delivery applications, new physiological improvements and the development of alternative derivatives and compounds.

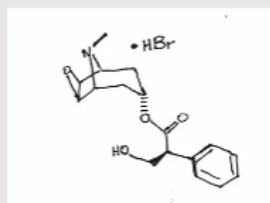
## Commercially available products

*DMF filed in the USA, EU (CEP) Canada & Korea*



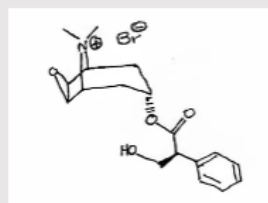
Scopolamine Hydrobromide  
USP

[Spec sheet](#)



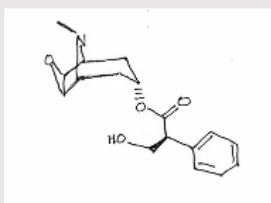
Hyoscine Hydrobromide  
EP

[Spec sheet](#)



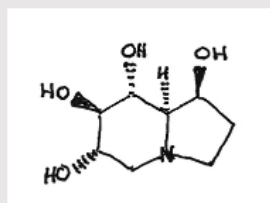
Methscopolamine Bromide  
USP

[Spec sheet](#)



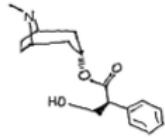
Scopolamine Base  
EP

[Spec sheet](#)



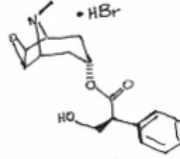
Castanospermine (Celgosivir)  
(*Castanospermum australe*)

[Spec sheet](#)



Atropine Base  
USP & EP

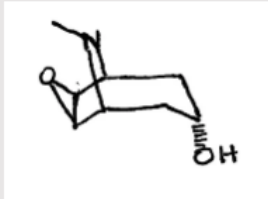
[Spec sheets](#)



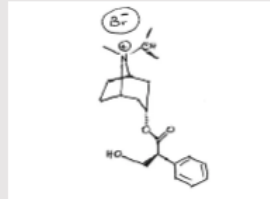
Atropine Sulfate  
USP

[Spec sheet](#)

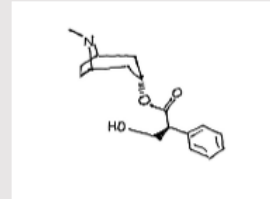
### Development pipeline



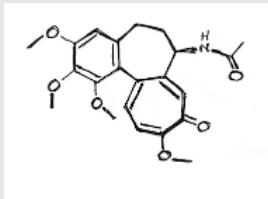
Scopolamine



Ipratropium bromide



Belladonna Extract  
(*Atropa Belladonna*)



Colchicine  
(*Gloriosa superba*)