

MOEHS CANTABRIA
FINE CHEMICALS

CHEMISCHE FABRIK BERG
FINE CHEMICALS



MOEHS
FINE CHEMICALS



MOEHS
FINE CHEMICALS



MOEHS
FINE CHEMICALS



MOEHS
FINE CHEMICALS

OUR FUTURE
IS YOUR
BUSINESS
STRENGTH

MOEHS
FINE CHEMICALS

FOCUS ON THE CUSTOM
MANUFACTURING



MOEHS
FINE CHEMICALS



MOEHS
FINE CHEMICALS



MOEHS
FINE CHEMICALS

MOEHS BION
FINE CHEMICALS

MOEHS CANTABRIA
FINE CHEMICALS

- MOEHS HISTORY
- PHILOSOPHY
- CAPABILITY & REGULATORY AFFAIRS
- HOW WE WORK
- OUR COMMITMENT WITH SAFETY AND ENVIROMENT
- POWERFUL REGULATORY SKILLS
- WHY US?
- SOCIAL MEDIA



MOEHS HISTORY



MOEHS HISTORY

1962

MOEHS was founded in Barcelona by Mr. Melchor Mallasen Ornat, hence the name of the company Mallasen Ornat and Sons. MOEHS was commercially established as a fine chemical manufacturer for the Pharmaceutical Industry.

Currently

MOEHS IBERICA is the headquarters of the MOEHS group. It performs corresponding services for each of its subsidiaries and for the group as whole.

Its R&D Building houses a laboratory and plant dedicated to the production of small quantities of so called Highly Active Potent Ingredients or any other Ingredients for the Pharmaceutical Industry.



MOEHS (1962)



SANOFI (1980)



PMC (1995)



MOEHS CANTABRA
(2000)



COPRIMA (2005)



BENECHIM (2008)



C.F. BERG (2009)



MOEHS BCN (2013)



ZETA PHARM.
(2019)



MOEHS IBERICA (CURRENTLY)

MOEHS HISTORY

MOEHS GROUP HIGHLIGHT

>210

M Eur Turnover

>800

Employees

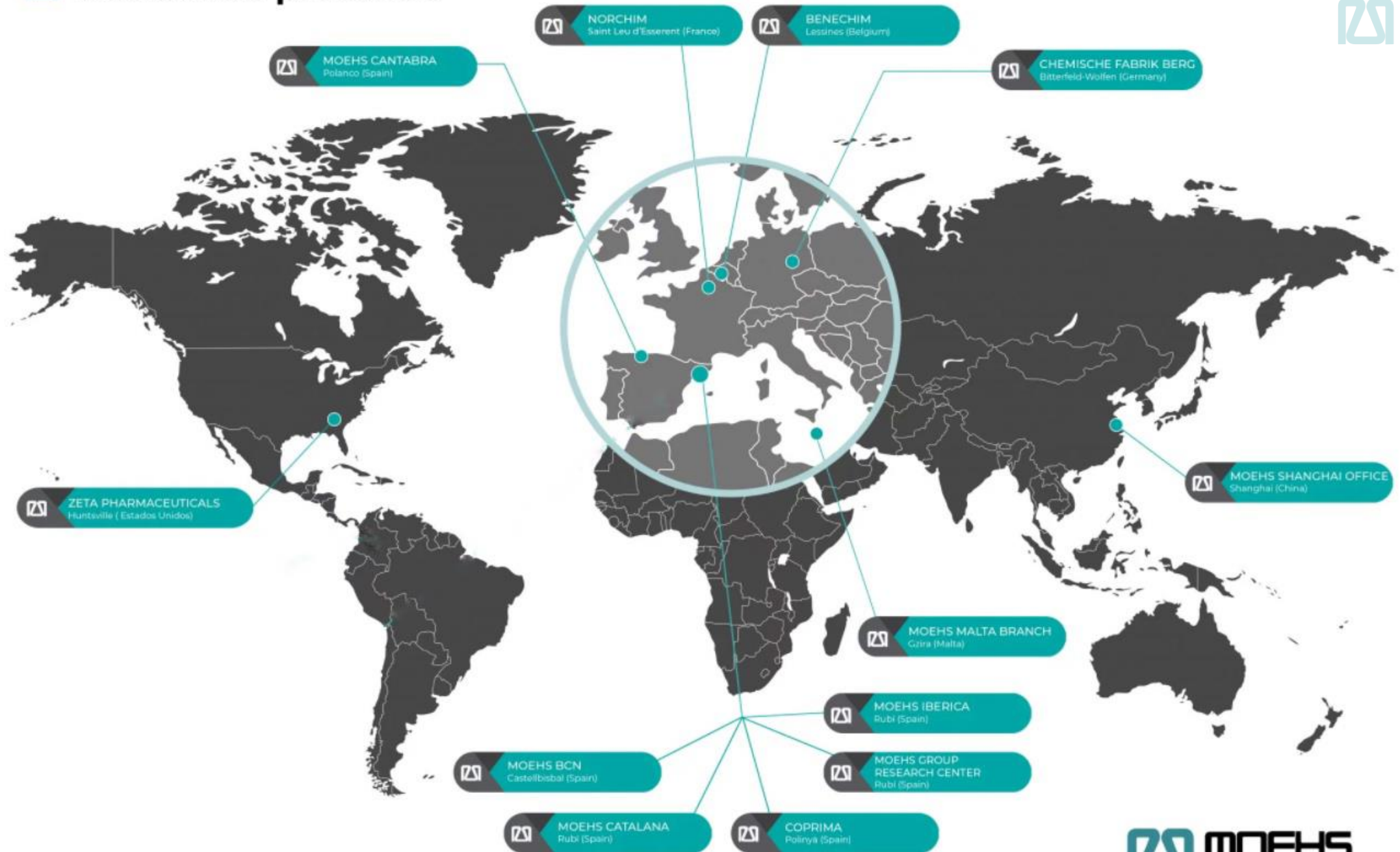
1100

Cubic Meters

7 + 1

7 Fine chemicals
+1 biotech site

Worldwide presence



PHYLOSOPHY



Quality of products and services

which develops trust from our customers, keeping their loyalty and establishing long-term partnerships.



Guarantee of flexibility and reliability

being proactive to the needs of our clients.



Cost optimization

a direct result of our strategy on activities such as development, competitiveness and investments on equipment.

PHYLOSOPHY

CONTINUOUS COST OPTIMIZATION

- ✓ Cost improvement due to industrial knowledge and experience in the market.
- ✓ Use of maximum productive capacity.
- ✓ Continuous optimization of the supply chain associated with the manufacturing process.

PROACTIVITY

- ✓ Flexibility in logistics.
- ✓ "Customization" of a compound according to the client's needs.
- ✓ Prospecting and selection of suppliers.

RIGOR

- ✓ Supply guarantee.
- ✓ Use of maximum productive capacity.
- ✓ Minimization of risks through close communication with the client.
- ✓ Complete documentary support that covers the client's needs.
- ✓ Policy backed by compliance with GPM regulations, FDA inspections and numerous audits of our clients.
- ✓ Environmental policy.

RELIABILITY

- ✓ Complete monitoring of the supply chain.
- ✓ Continuous analysis of the factors of the production process.
- ✓ Transparency and objectivity in the information towards our clients.



CAPABILITY & REGULATORY AFFAIRS



CAPABILITY & REGULATORY AFFAIRS

ICH Q7 Compliance - All sites are regularly audited by health authorities as well as customers



MOEHS CATALANA



CAPABILITY

Capacity	Reactor	Temperature Range	Pressure range (bars)	Special operations	Centrifuges	Dryers	Others
430m ³	GL: 0,6.. 16m ³ SS: 2.. 10m ³	-20 to 250°C	-1 to + 20	Hydrogenation Jet Mill	SS Nutsche Filters	Tray	Blenders, Sievers, pin & hammer & jet mills

REGULATORY AFFAIRS

FDA Inspected since

1984

Other inspections

AEMPS-Spain (Sep 2020), K-FDA, Japanese Accreditation, Russian H.A. (July 2017)

Activity

Generics / CM

CAPABILITY & REGULATORY AFFAIRS

ICH Q7 Compliance - All sites are regularly audited by health authorities as well as customers



NORCHIM



CAPABILITY

Capacity	Reactor	Temperature Range	Pressure range (bars)	Special operations	Centrifuges	Dryers	Others
25m ³	GL: 0,1.. 2,5m ³ SS: 60 l.. 4m ³	-60 to 170°C	Up to 20	Hydrogenation NMR studies	SS	Paddle Tray and Bicone	Blenders Sievers

REGULATORY AFFAIRS

FDA Inspected since

1989

Other inspections

AFSSAPS-France (Dec 2018),
Japanese Accreditation

Activity

Process Research / CM

CAPABILITY & REGULATORY AFFAIRS

ICH Q7 Compliance - All sites are regularly audited by health authorities as well as customers



COPRIMA



CAPABILITY

Capacity	Reactor	Temperature Range	Pressure range (bars)	Special operations	Centrifuges	Dryers	Others
72m ³	GL: 3.. 11m ³ SS: 3.. 10m ³	-15 to 150°C	-1 to +1	Jet Mill	SS SS automatic	Fluid bed Paddle Bicone	Blenders, Sievers, pin & hammer & jet mills

REGULATORY AFFAIRS

FDA Inspected since

2001

Other inspections

AEMPS-Spain (Dec 2018), Cofepris, Japanese Accreditation

Activity

Generics

CAPABILITY & REGULATORY AFFAIRS

ICH Q7 Compliance - All sites are regularly audited by health authorities as well as customers



C.F. BERG



CAPABILITY

Capacity	Reactor	Temperature Range	Pressure range (bars)	Special operations	Centrifuges	Dryers	Others
50m ³	GL/SS 0,6.. 6m ³	-10 to 150°C	Up to 10	Jet Mill	SS Hastelloy	Paddle Tray and Bicone	Blenders Sieves

REGULATORY AFFAIRS

FDA Inspected since

2002

Other inspections

BfArM-Germany (Dec 2017), K-FDA,
Japanese Accreditation

Activity

Generics / CM

CAPABILITY & REGULATORY AFFAIRS

ICH Q7 Compliance - All sites are regularly audited by health authorities as well as customers



MOEHS CANTABRA



CAPABILITY

Capacity	Reactor	Temperature Range	Pressure range (bars)	Special operations	Centrifuges	Dryers	Others
368m ³	GL: 4.. 10m ³ SS: 4.. 16m ³	-15 to 150°C	-1 to + 6		SS SS automatic	Fluid bed Paddle, Bicone Spray drier	Blenders, Sievers, pin & hammer & jet mills

REGULATORY AFFAIRS

FDA Inspected since

2010

Other inspections

AEMPS-Spain (Jan 2021), TGA, Japanese Accreditation

Activity

Generics / CM

CAPABILITY & REGULATORY AFFAIRS

ICH Q7 Compliance - All sites are regularly audited by health authorities as well as customers



BENECHIM



CAPABILITY

Capacity	Reactor	Temperature Range	Pressure range (bars)	Special operations	Centrifuges	Dryers	Others
100m ³	3 x 30 l glass	-70 to 120°C	-1 to + 1,5	GMP Kilolab HPAPIs unit	SS Nutsche Filter	Tray	Sievers Mill

REGULATORY AFFAIRS

FDA Inspected since

2013

Other inspections

AFMPS-Belgium (Jan 2021), Japanese Accreditation

Activity

Generics / CM

CAPABILITY & REGULATORY AFFAIRS

ICH Q7 Compliance - All sites are regularly audited by health authorities as well as customers



MOEHS BCN



CAPABILITY

Capacity	Reactor	Temperature Range	Pressure range (bars)	Special operations	Centrifuges	Dryers	Others
200m ³	GL: 4.. 8m ³ SS: 4.. 10m ³	-14 to 120°C	-1 to + 6		SS SS automatic	Bicone	Blenders, Sievers pin, Mills...

REGULATORY AFFAIRS

FDA Inspected since

2019

Other inspections

AEMPS-Spain (March 2019), Japanese Accreditation

Activity

Generics / CM

A blurred background of a laboratory setting. In the foreground, a person wearing a white lab coat and blue nitrile gloves is holding a test tube containing a red liquid. In the background, another person in a white lab coat and blue gloves is working with a piece of glassware. There are various pieces of laboratory glassware, including a beaker with yellow liquid and a flask with blue liquid, visible on a lab bench.

HOW WE WORK

HOW WE WORK



MGRC

- From few ml to 30 L
- Full GMP if needed.

PILOT PLANT

- GL and SS reactors from 500 L to 3,000L
- Full GMP.

INDUSTRIAL

- Site assignment based on multifactorial inputs.
- Streamline Transfer monitored by MGRC team
- Dual Site strategy upon Market Conditions.

HOW WE WORK

MGRC (MOEHS GROUP RESEARCH CENTER)



CAPABILITY

Capacity	Reactor	Temperature Range	Pressure range (bars)	Special operations	Centrifuges	Dryers	Others
175m ³	GL: 0,8.. 10m ³ SS: 2.. 12m ³	-10 to 180°C	-1 to + 40	Hydrogenation Hydrogenation catalysis	SS, Uranus alloys, Nutsche Filters	Fluid bed Paddle Bicone	Blenders Sievers...

REGULATORY AFFAIRS

FDA Inspected since

-

Other inspections

AEMPS-Spain (Dec 2020)

Activity

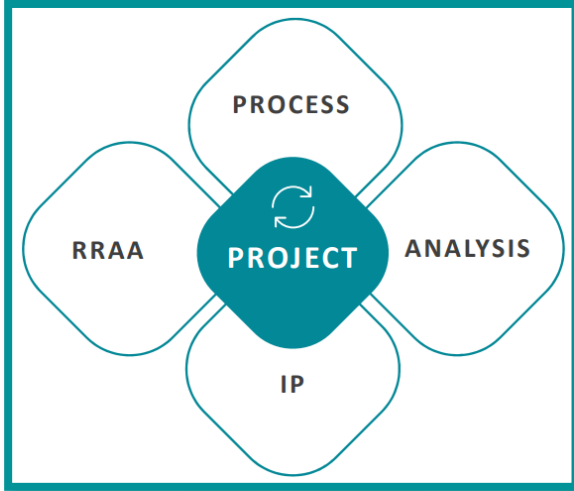
Development
Generics / CM



ICH Q7 Compliance - All sites are regularly audited by health authorities as well as customers

HOW WE WORK

MGRC (MOEHS GROUP RESEARCH CENTER)



Analytical & Process.
Development following Quality by Design (QbD) strategies.

Expertise in Control Strategy to support process registration and validation.

Controlled Substances Handling.

CAPABILITIES

- KiloLab: from 1L to 30L
- Hydrogenation: from 100ml to 2L, and up to 60Bar.
- Cryogenic reactions: from 100ml to 30L, -70° C to 185° C.
- HPAPIs: development and kilolab facility.

TEAM

Highly qualified personnel.
50 chemists in 2023.
Capability for up to 70.

SPACE

Current lab around 600m².
MGRC is more than 2000m².



OUR COMMITMENT WITH SAFETY AND ENVIROMENT

OUR COMMITMENT WITH SAFETY AND ENVIRONMENT



Supports and follows the recommendations of the principles of responsibility of the PSCI.

Supports and follows the recommendations of the principles of responsibility of the PSCI.

Assessment and control of the various emission sources in collaboration with local authorities

Assessment and control of the various emission sources in collaboration with local authorities

Park of tanks for solvents, with P-N2 valves.

Alkaline and acid scrubbers for cleaning gases emitted into the atmosphere.

Warehouse for flammable solvents in drums.

Warehouse for flammable solvents in drums.

Wastewater treatment plants.

Process safety studies applied to the entire production process (DCS, ARC, RC1, risk analysis...)

Continuous training in Health and Safety.



Pioneers in Spain in the implementation of a waste management program.



POWERFUL REGULATORY SKILLS

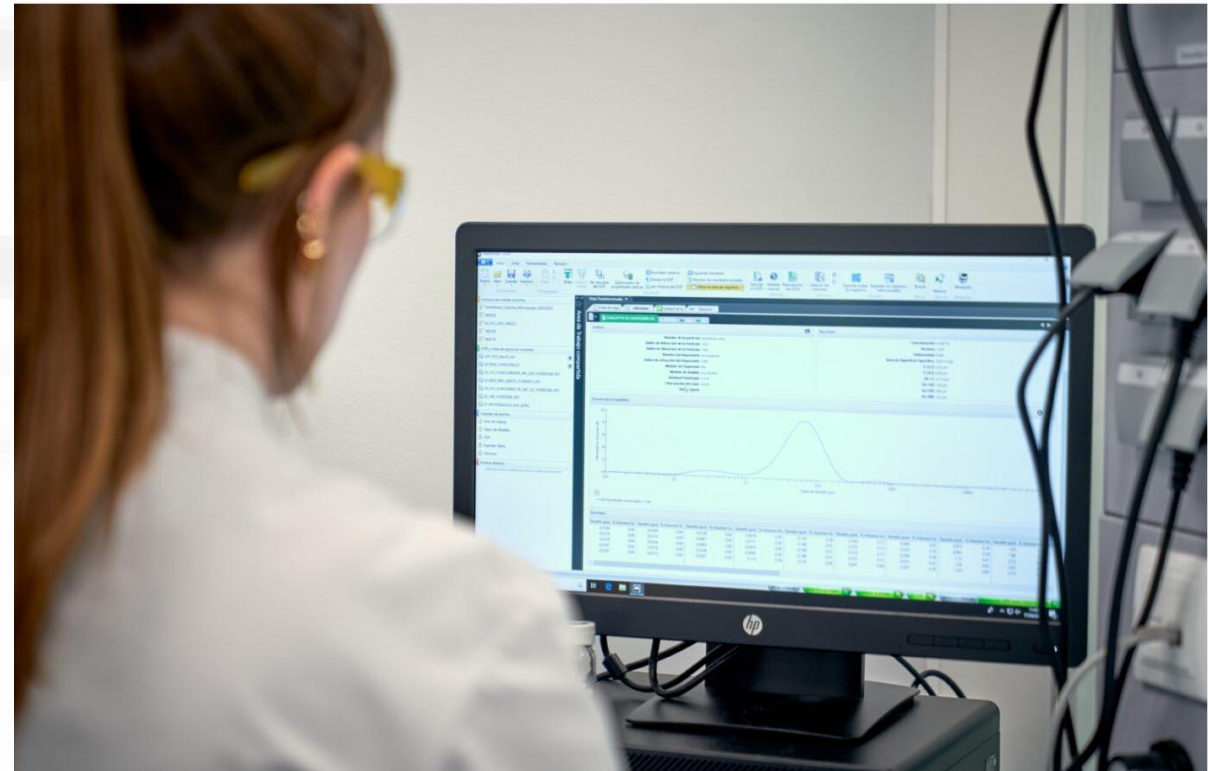


POWERFUL REGULATORY SKILLS

Major Monograph compilation.
Compliance to *USP, EP, JP, ND*.
More than 30 CEPs issued.
29 USDMF filed at FDA
10 JDMF filed at PMDA.

SHE beyond legally required

Audited by PSCI members. 





MOBI
FINE CHEMICALS

WHY US?



WHY US?

RELIABLE CDMO

Linearity of the Project: From PoC till Industrial.
Robust Process design.
Novelty IP Identification.

GROWTH BASED ON COLLABORATIVE RISK AND COST-SHARING APPROACH

Willingness of Co-Investment with Co-Marketing opportunities.
Maximalize Development pipeline with no fixed Assets.
Reduction on Development timelines.

PROVEN & SELECTED SUPPLIER

Expertise. Reliability.
Reactivity.
COGS effectiveness

FULL ADAPTATION UPON NEEDS

Short-term Capability at disposal
Enlargement of existint Units.
Adaptability/Modulation of installations & technical requirements.

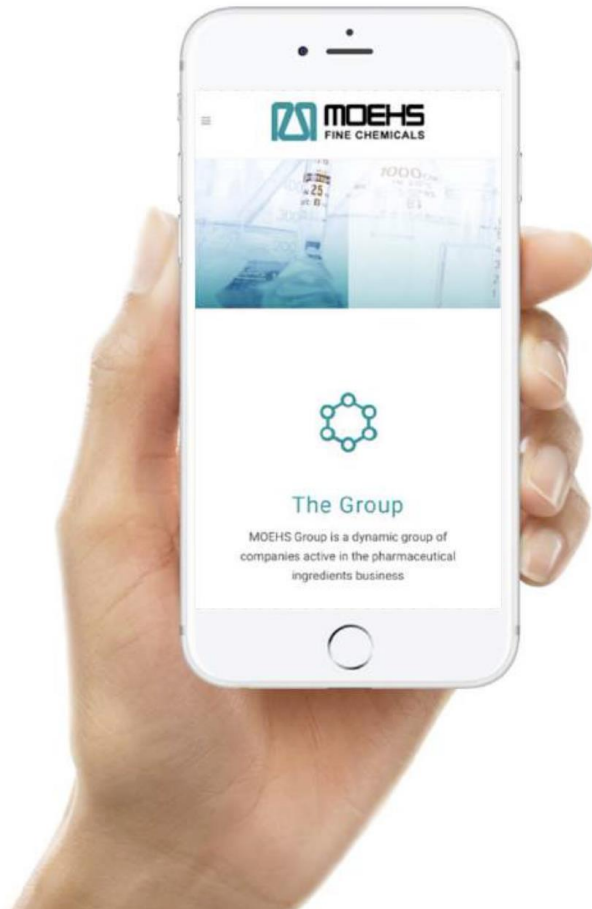




SOCIAL MEDIA


SOCIAL MEDIA

KEEP IN TOUCH



WEBSITE 
<https://moehs.com>

EMAIL 
info@moehs.es

HEADQUARTERS 
Pol. Ind. Cova Solera
Carrer Roma, 8-12,
08191 Rubi
Barcelona (SPAIN)

X (OLD TWITTER)  
@Moehsgroup

LINKEDIN 
Moehs Iberica

YOUTUBE 
Moehs Group



THANK YOU SO MUCH.

