

ERT SITE FEASIBILITY

Smarter site selection leveraging historical performance data

BUILD CONFIDENCE IN RECRUITING AND ENROLLING THE RIGHT PATIENTS

Patient recruitment challenges account for up to 45% of study delays globally, with average trial costs per day at \$155,000 per compound. Considering that it costs approximately \$30,000 for site initiation alone, with an average per patient cost ranging from an additional \$5,500 to \$7,600, a site's ability to enroll patients can significantly impact trial costs¹. You need to identify tenfold more patients than required to be randomized in order to achieve total enrollment goals.

**NEARLY 50% OF
SITES FAIL TO
MEET PATIENT
ENROLLMENT
TARGETS**

MAXIMIZE INVESTMENT AND OPTIMIZE STUDY OUTCOMES

ERT Site Feasibility enables you to use an evidence-based approach to the feasibility assessment and selection of sites for clinical trials. With visibility into the historical performance of clinical sites, including analytics on patient enrollment and data quality trends, you can evaluate relative performance among sites before a trial begins.



Anticipate site performance

Access to historical site performance on data quality enables you to pick sites with confidence. ERT uses proprietary algorithms based on behavioral and performance data to generate a model that scores a site's historical performance relative to other sites in the database based on criteria integral to your study, including Site Patient Enrollment Score, Site Quality Score, Site Operational Efficiency Score and Site Overall Score. The model is continuously updated with performance data from ongoing trials.



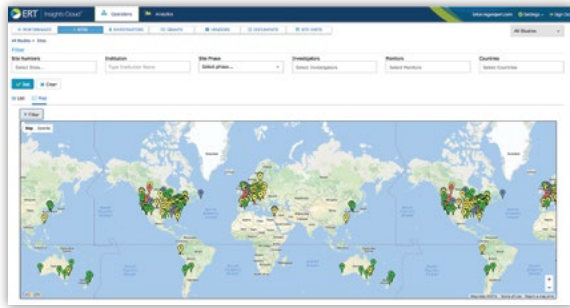
Create customized queries

Our solution includes a user-friendly, customizable web-based visualization and analytics application. You can create your own queries across multiple therapeutic areas, indications, geographic locations, study phases, patient populations and specific key performance indicators (KPIs), including operational performance, patient enrollment and data quality. Contact information and resulting performance data that meet these customized queries can then be requested.



Power up your enrollment

11% of sites fail to enroll a single patient. ERT Site Feasibility provides the confidence you need to recruit and enroll the right patients for your clinical trial. You can select sites that have a proven track record of meeting enrollment goals based on historical performance data.



ANTICIPATE SITE PERFORMANCE WITH HISTORICAL PERFORMANCE DATA



Efficiently reduce trial costs

A typical phase 3 study initiates 100 sites with an average startup cost of \$30,000. ERT Site Feasibility makes selecting the right sites easy and helps prevent waste caused by initiating sites that don't perform.



POWER UP YOUR ENROLLMENT BY SELECTING SITES BASED ON HISTORICAL PERFORMANCE DATA

CONFIDENCE AT EVERY TURN

With millions of data points collected over the past 10 years from over 40,000 sites worldwide through thousands of trials, we are uniquely positioned to support your site feasibility and selection decisions. Rely on our expertise to minimize risk and uncertainty around your site performance data.

ERT SITE FEASIBILITY

Smarter site selection leveraging historical performance data. For more information, email sales@ert.com or visit ert.com.

DISCLAIMER

ERT's Site Feasibility solution is based on aggregated historical site behavioral and performance data gathered by ERT through the services it provides to clinical trial sponsors and contract research organizations. The performance data is proprietary to ERT and processed using ERT's proprietary algorithms to generate the Site Patient Enrollment Score, Site Quality Score, Site Operational Score and Site Overall Score (the Scores). The Site Patient Enrollment Score, Site Quality Score and Site Operational Score represent a rating for each site's relative historical performance on certain objective Key Performance Indicators (KPIs), including, but not limited to: enrollment efficiency; enrollment duration; site startup time; subject retention; ECG quality; overall respiratory quality; data receipt; missing visits; and visit compliance. The Site Overall Score aggregates the Site Patient Enrollment Score, Site Quality Score and Site Operational Score for an overall performance score. A complete list of KPIs on which the Scores are based is available upon request. The Scores for each site are a reflection of the site's historic performance on the KPIs measured relative to other sites included in ERT's database. The Scores are not a reflection of successful or unsuccessful past performance on the KPIs measured or of successful or unsuccessful general site performance. The Scores also do not and are not intended to predict future performance on the KPIs measured; past performance may not be indicative of future performance. ERT's Site Feasibility solution includes contact information for the sites, where available. In some cases, principal investigators are associated with a site's Scores only for purposes contacting sites for which ERT does not have other contact information. In those cases, the Scores do not reflect and are not intended to reflect performance of the associated principal investigators. ERT's Site Feasibility solution does not contain information about trial sponsors, individual study subjects or patients, or protected health information. ERT's Site Feasibility solution is a tool to support site feasibility decisions and selections. All site decisions are the exclusive responsibility of the study sponsor. ERT expressly disclaims any liability for site selection decisions, including any consequential damages resulting therefrom. ERT endeavors to ensure that all scores are accurate based on correct, objective data as reported to ERT; however, ERT expressly disclaims all liability for any incorrect data or scores included in the solution, including any consequential damages resulting.