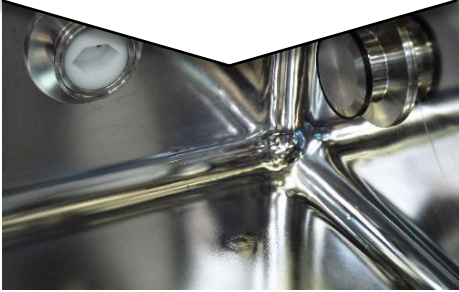




## Company presentation

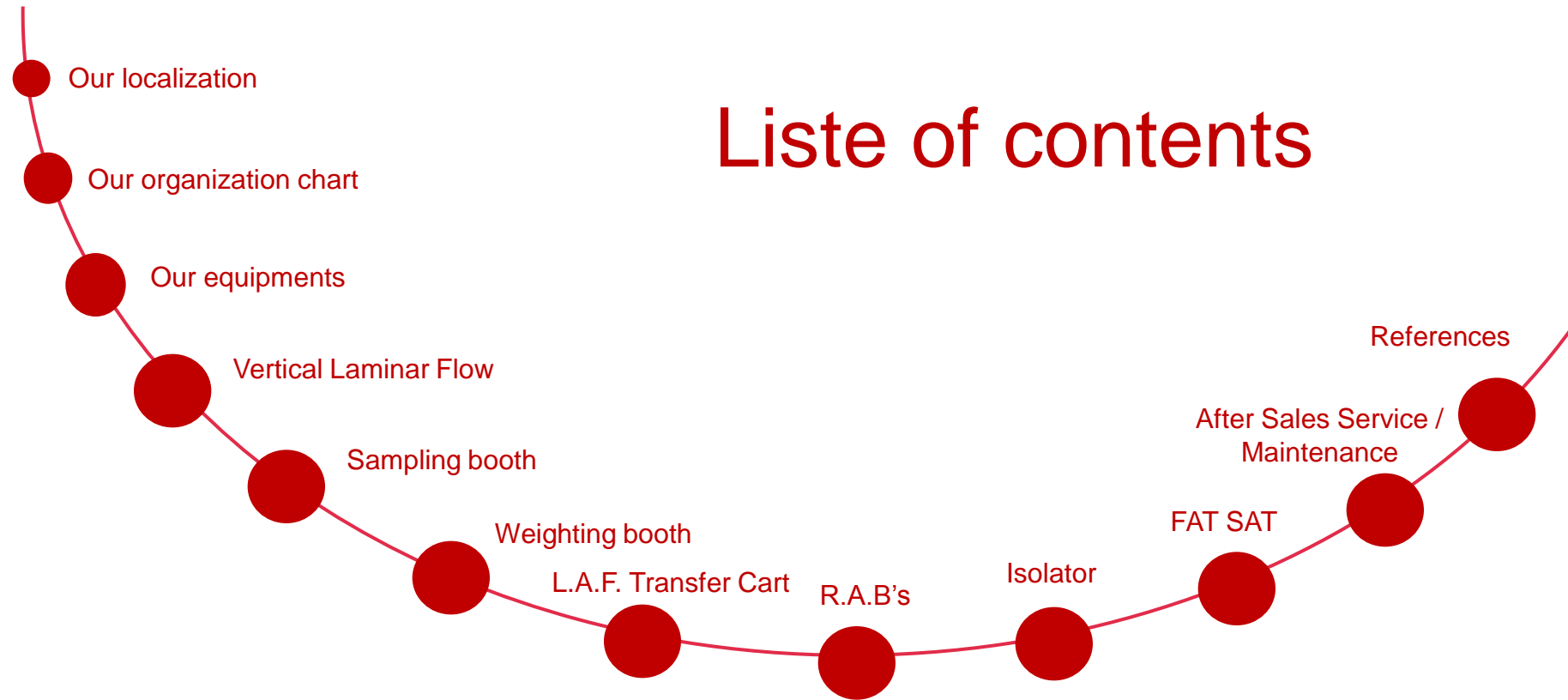


Pharma solutions for a better life!





# Liste of contents



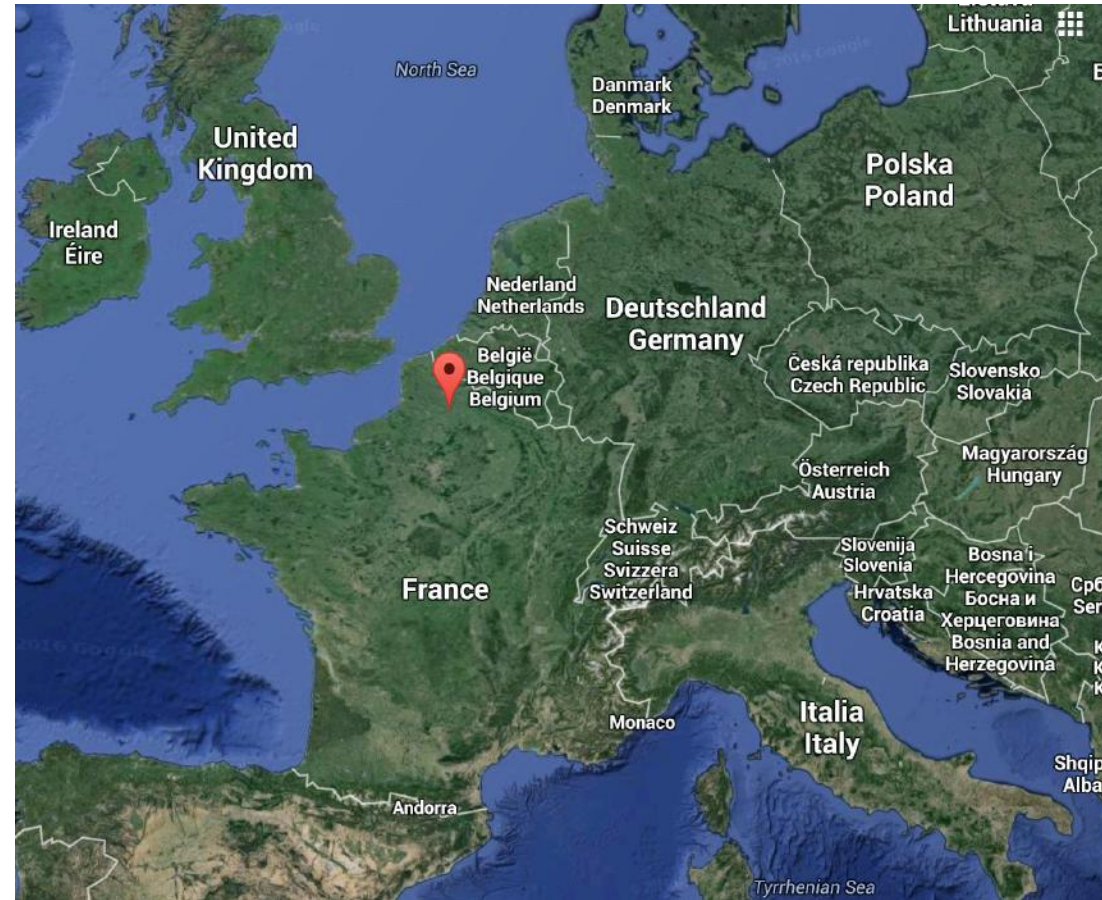




## Our localization

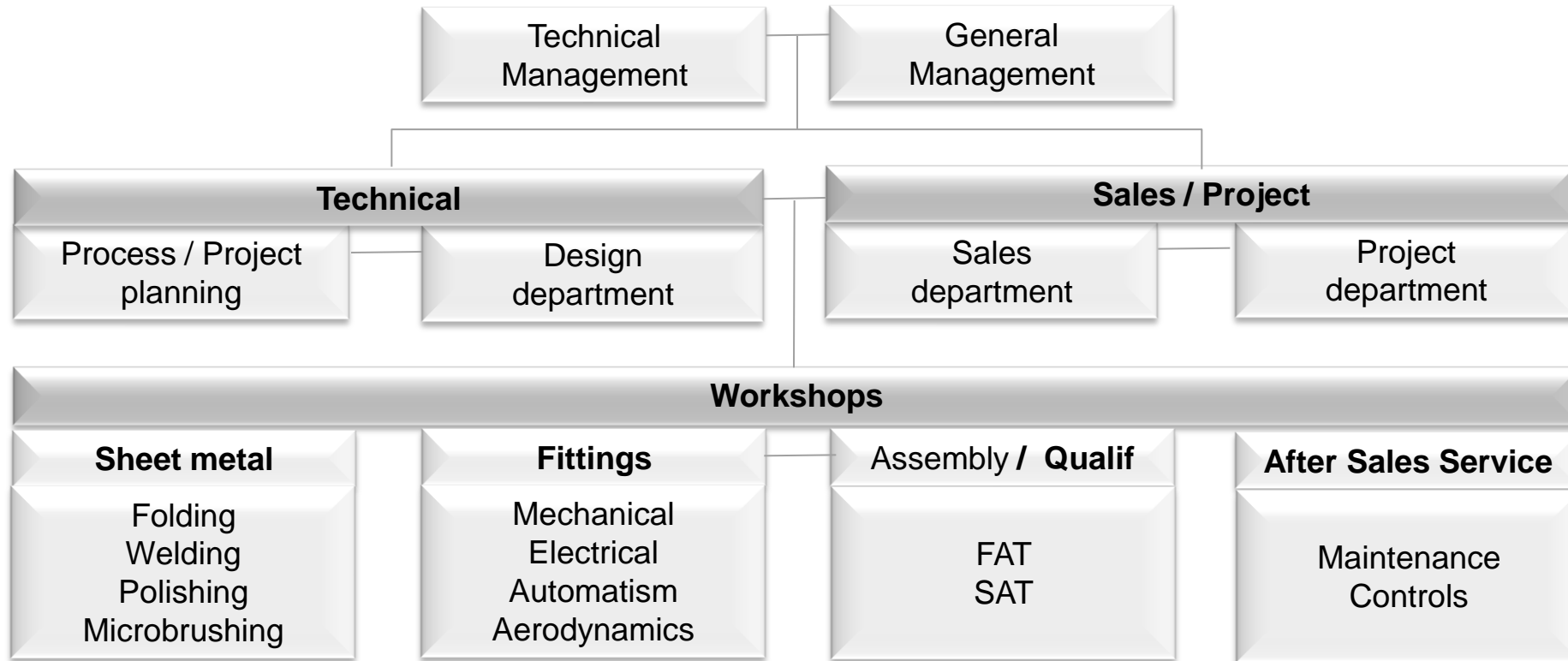


Our localization, at 150km to the North from Paris, is close to Brussels, London, Frankfurt and Paris. We have a 2500 sqm workshop, a team highly-specialized in confinement solutions, sophisticated aerodynamics engineering with 3D display and simulation softwares. Thanks to our cleanroom, we are able to carry out full-size ergonomic tests for our customers.





## Our organization





**Our equipments**



**Laminar Air Flow**



**Sampling booth**



**Weighing booth**



**LAF Transfer Cart**



**Isolators & RABs**





## Vertical Laminar Air Flow

*Protects the operations of products in a clean and sterile environment*

A class ISO 5 laminar air flow maintains an overpressure in the protected area and improve the air quality in the surrounding area.

Thus, during the packaging and filling operations, the airborne particles are eliminated.





## Sampling Booth

*Protects the environment ,  
the products and  
the operator during  
sampling*

This station insures the integrity of the products, the protection of the operators and prevents cross contamination.

The sampling area is protected by an ISO 5 vertical laminar airflow.



## Weighing Booth

*Protects the environment ,  
the products and  
the operator during  
weighing*

This station insures the integrity of the products, the protection of the operators and prevents cross contamination.

The weighing area is protected by an ISO 5 vertical laminar airflow and a partial air recycling.





## LAF Transfer Cart

*This trolley is used for the storage and the transfer of products sensitive to air biocontamination*

A laminar airflow class ISO 5 sweeps the storage area and creates a positive pressure that isolates the loading; the cart thus transits in the class B or C zones and confines the loading of products or materials stocked on trays or in baskets.





## RABS

*Enables the  
containment of sterile  
but non toxic  
operations*

A class ISO 5 laminar airflow maintains a positive pressure in the protected area and improves the air quality in the surrounding area.





## Isolators / Glove Boxes

*Protects the operator  
and the products  
during handling of  
toxics and cytotoxics*

Containment in negative pressure by a ventilation filtered in open loop.

Considerable tightness class 2.

HEPA double filtration.

Regulation of negative pressure.



**Isolators /  
Glove Boxes**

*Protects the  
operator and/or  
the products  
during handling of  
toxics or sterile  
products*



Our design department is equipped with softwares, for ergonomic modelling 3D displays and aerodynamics simulations.



**Isolators /  
Unique selling  
points**

*Protects the  
operator and/or  
the products  
during handling of  
toxics or sterile  
products*

Electrical frame to adjust  
height to be adapted to  
each operator.



Hermetic and adjustable  
feedthroughs.



Change of external filters in  
Bag-In/Bag-Out (BIBO).



## LED Lighting

*Waterproof lighting in  
stainless steel ,  
corrosion and shock  
resistant*

This lighting facilitates the maintenance and decontamination.

It ensures a particularly homogenous lighting in working areas.

Available in different dimensions and in 18W, 36W and 58W.





## Safety Cabinet

*Protects the operator , the products and the environment during handling of hazardous or nanoparticles*

An air flow opposite to the operator captures the aerosols emitted during the manipulation.

A front vertical air flow protects the operator's respiratory system.



**FAT  
SAT**

**FAT**

The equipments are tested in our Cleanroom before shipping according to our or the customer protocols

**SAT – Tests carried-out:**

- Cartography of the air flow, speed and homogeneity
- Particles counting and classification
- Air and watertightness control of filters and dust classification.
- Smoke test





**After Sales  
Service /  
Maintenance**

**Tests according to standards in force (ISO 14644) :** Classes of dust contamination, cartography of speeds, integrity of the filters, etc

**Preventive / curative maintenance**  
changing of filters and of the electromechanical components, supply of spare parts, etc

**Modifications :** setting to the standards, modifications of the operation, etc.



# References on 2015:

- STALLERGENES	Isolateus:	335 000 €
- PIERRE FABRE	Isolater	500 000 €
- VIRBAC	Carts	160 000 €
- SERUM INSTITUTE	Carts	150 000 €
- IMA	Air flow ceiling	300 000 €
- WELEDA	Weighing booth	200 000 €



Pierre Fabre



CAPSUGEL®







**Your  
partner**



Since 25 ans, we are attentive to our customers and we assist them as a true partner throughout their projects.