

CHANGZHOU PHARMACUTICAL FACTORY



Company Profile

- + About us
- + Organization chart
- + Honors



About us

- founded in year 1949, totally occupies 300,000 m²
- one of the core industrial enterprise of SPH
- 2 wholly owned subsidiaries----Changzhou Wuxin and Nantong Chanyoo
- more than 1400 employees, total assets RMB1.2 billion
- especially focus on cardiovascular drugs
- Captopril tablets passed the quality and curative effect consistent evaluation
- 2 ANDA approved, and have been exported to the US commercially

Changzhou Pharmaceutical



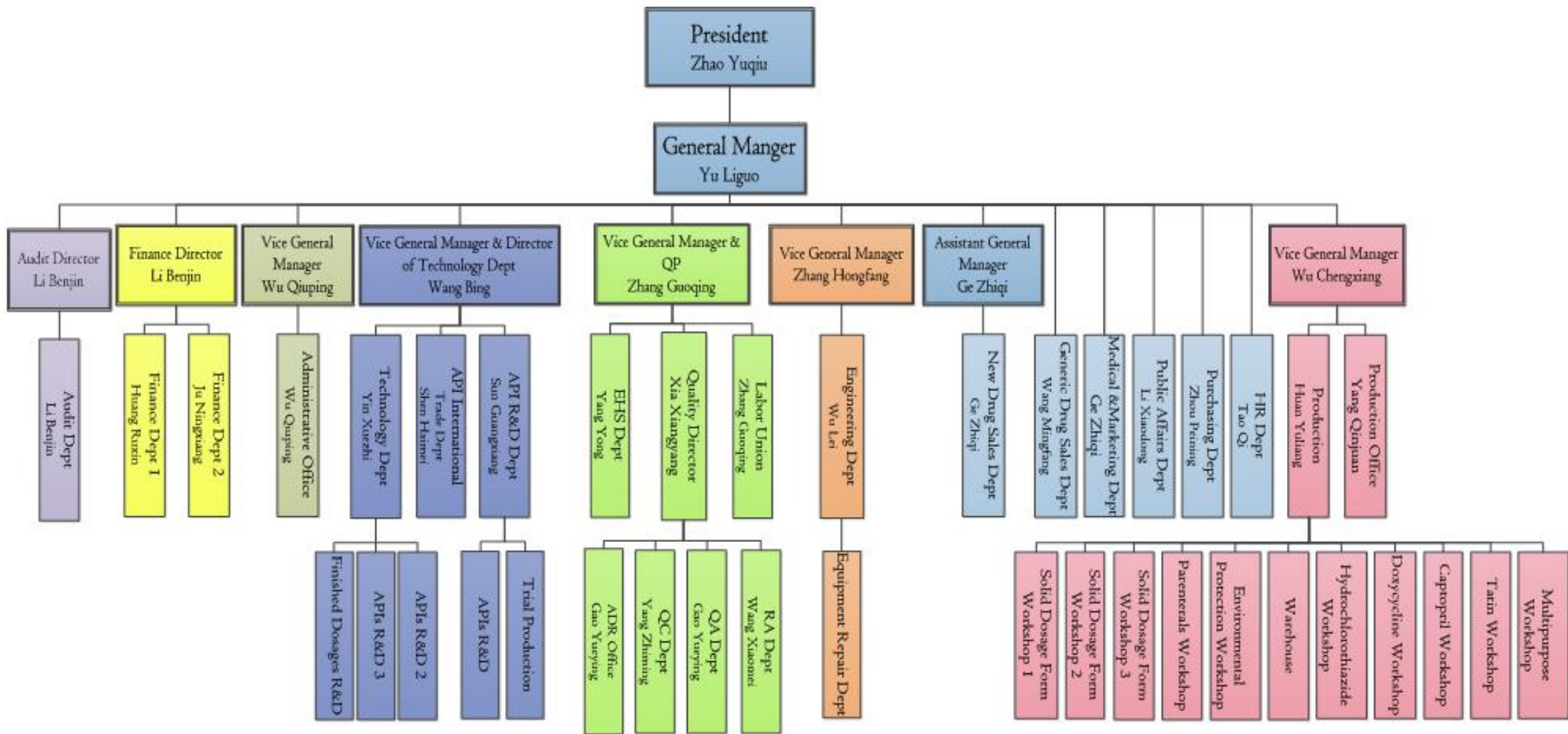
Changzhou Wuxin



Nantong Chanyoo Pharmatech



Organisation Chart



Honors

more than 50 honorary titles

Top 100 pharmaceutical industrial enterprises in China

Price integrity company

The state designated production enterprise for basic drugs

China AAA level credit company

National excellent API export brand

China Hi-tech enterprise

"contract performance and trust worthy" company

National demonstration enterprise of drug quality and integrity



Business

- ⊕ Turnover
- ⊕ Finished formulations
- ⊕ APIs
- ⊕ Major partners

B

Turnover

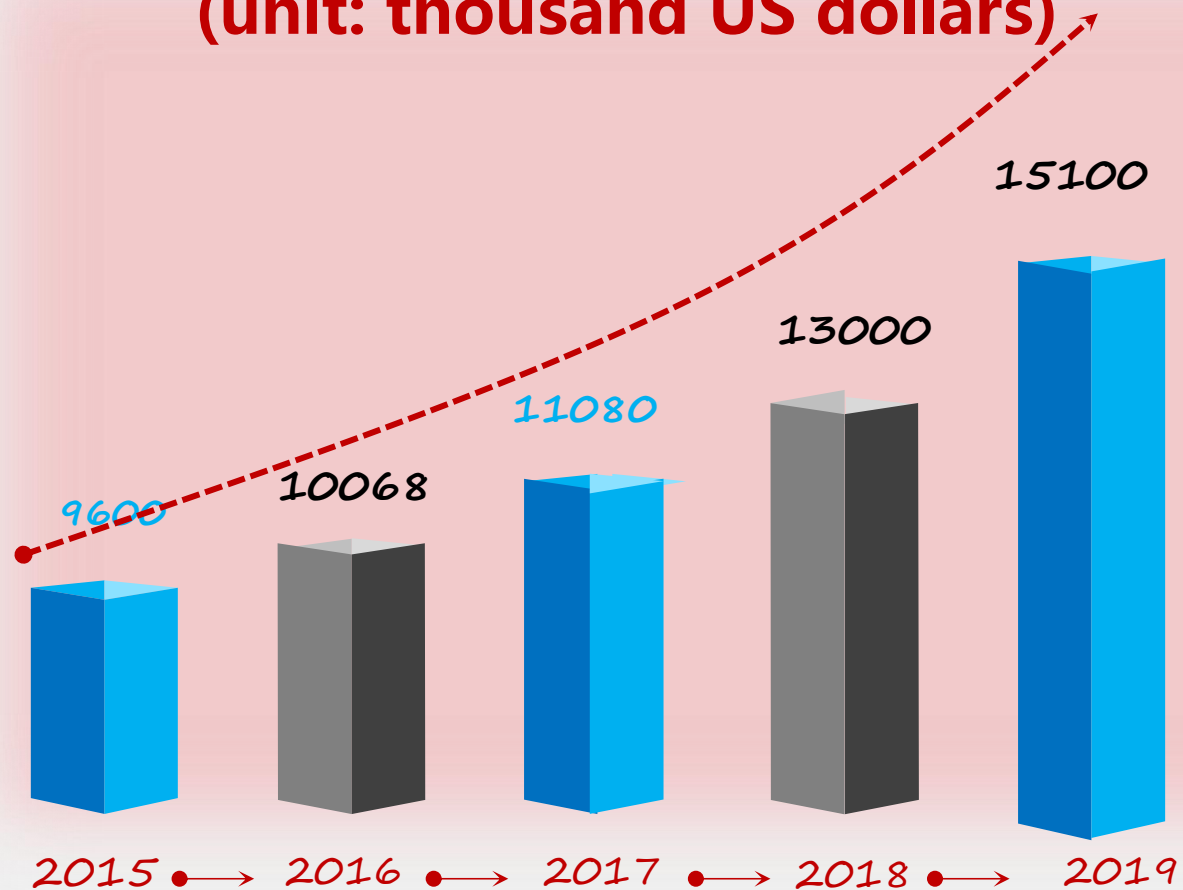
turnover of last 5 years
(unit: thousand US dollars)

Sales of APIs and finished products

develop together

Rapidly increased for 5 consecutive

years



Finished products

- ✓ ANDA approval in the US ---- Rosuvastatin Calcium tablets, Doxycycline Hyclate tablets & Capsules
- ✓ Consistency assessment approved ---- Captopril tablets, HCTZ tablets, Enalapril Maleate tablets and Clozapine tablets
- ✓ Exclusive product in China ---- Enalaprilat injection, Compound Dihydralazine Sulfate Tablets

finished products



Telmisartan Tab



HCTZ Tab



Enalapril Tab



Telmisartan cap



Aminopyrine Tab



Sotalol Tab



Folic Acid Tab



Clozapine Tab



Metformin HCl Tab



Clonidine Tab



Captopril Tab



AZM Capsules



ROX Capsule



Domperidone tab



USRO Tab



Compound Vitamin



Piracetam injection



Enalapril Injection



VB1 Injection



Compound SAC injection



VB6 Injection



VC Injection



APIs

A
P
I
S

- ✓ Development of most APIs is matched with finished products, which can control the product cost and quality well
- ✓ Pay high attention to EHS system



Rosuvastatin



Ticagrelor



Pregabalin



Ezetimibe



LCZ-696



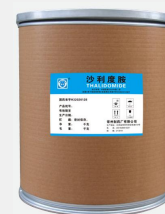
Atovastatin



HCTZ



Captopril



Doxycycline



Sofosbuvir



Major Partners

International cooperation



Domestic cooperation



Advantage

+ R&D

+ Quality

+ Production

+ Sales & Services

高质惠民，健康为民

----奋进中的常州制药厂



R&D

Adhere to the vertical integrated R&D on APIs and finished products

Build a platform for finished products R&D with delayed and controlled release



- ◆ 2 R&D centers are responsible for development of APIs and FDFs
- ◆ every year 8% of sales is spent on R&D
- ◆ adopt advanced quality testing instruments
- ◆ high pressure, ultra-low temp. and other special reaction test conditions are available in R&D lab
- ◆ current R&D pipeline varieties including 31 Generics, 20 APIs, 9 ANDAs and 18 Consistency assessment products

Postdoctoral R&D station

Jiangsu pharmaceutical engineering research center

Provincial Key enterprise R&D institute

Changzhou Cardiovascular medicine engineering technology research center

Local key lab for cardiovascular drugs



Quality

1984-2013

Nantong Chanyoo passed EUGMP inspection

RS tablets approved site inspection of USFDA
Nantong Chanyoo approved by PMDA

China GMP approval for both API and finished products

●

2014

2015

2016

2017

2018

2019

Changzhou Pharma approved by USFDA 9 times, passed EUGMP inspection 3 times

Changzhou Pharma and Nantong Chanyoo approved by USFDA
Changzhou Wuxin approved by China GMP

Changzhou Pharma approved by PMDA
Finished formulation workshop approved by USFDA

Changzhou Pharma and Nantong Chanyoo approved by FDA routine inspection



Production

- annual output of finished products is 8 million tablets, API is more than 1000MT
- including Cardiovascular, Anticancer, Antipyretic analgesic, Vitamin, Antibiotic and Health care products
- More than 50 kinds of API and intermediates
- Introducing advanced equipments and Siemens DCS control system in finished dosage production line
- Continuously improve EHS online monitoring, waste treatment, recycling and other aspects



Sales & Services

- More than 400 staffs constitute 2 professional marketing promotion teams
- Offers a lot of supports on academic research, professional training and doctor-patient education
- API exports to more than 50 countries and regions
- Sales revenue in 2019 is USD151 millions
- Sales revenue is expected to reach 200 million in 2020



Thank You

