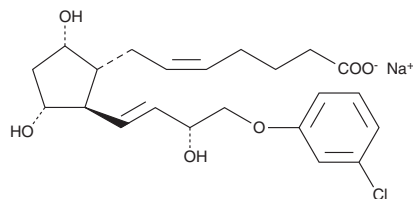


Veterinary APIs

A stable and potent analog of prostaglandin $F_{2\alpha}$ ($PGF_{2\alpha}$), cloprostenol is used in the care of domestic mammals to induce luteolysis, initiate estrus, and synchronize estrus cycles. Both the racemic and active isomer are also used to induce parturition, terminate abnormal and normal pregnancies, and treat chronic endometriosis and ovarian luteal cysts.

- US FDA and EMA compliant
- Analytical standards of impurities and degradation products available

CGMP (±)-Cloprostenol sodium salt



Nomenclature

Formal Name: (±)-9 α ,11 α ,15R-trihydroxy-16-(3-chlorophenoxy)-17,18,19,20-tetranor-prosta-5Z,13E-dien-1-oic acid, monosodium salt

CAS Number: 55028-72-3

Formula

Molecular Formula: $C_{22}H_{28}ClO_6 \cdot Na$ · **Formula Weight:** 446.9

Physiochemical Data

Solubility: Freely soluble in ethanol; soluble in water; practically insoluble in acetone, chloroform, diethyl ether, and hexane

Appearance: Odorless, white or off-white, slightly hygroscopic crystalline powder

Melting Point Range: 89-104°C

Availability

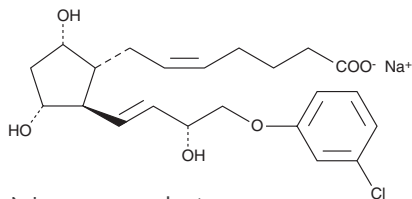
GMP material which conforms to the USP and BVP Monographs is available. The DMF is on file with the US FDA, Canada, Russia, in almost all EU member states, and in many other countries.



Cayman Pharma s.r.o.

Phone: (+420) 313 033 155
GMP-API@caymanpharma.com

CGMP (+)-Cloprostenol sodium salt



Nomenclature

Formal Name: (+)-9 α ,11 α ,15R-trihydroxy-16-(3-chlorophenoxy)-17,18,19,20-tetranor-prosta-5Z,13E-dien-1-oic acid, monosodium salt

CAS Number: 62561-03-9

Formula

Molecular Formula: C₂₂H₂₈ClO₆ · Na · **Formula Weight:** 446.9

Physiochemical Data

Solubility: Freely soluble in water; very soluble in ethanol; slightly soluble in acetone; practically insoluble in chloroform, diethyl ether, and hexane

Appearance: White to almost white, very hygroscopic powder

Melting Point Range: 89-104°C

Availability

GMP material is available and the ASMF for (+)-Cloprostenol (sodium salt) is on file in the UK, Switzerland, and in most EU countries.