



 Life Time Care Company

BORYUNG

HEALTHCARE GROUP



PHARMACEUTICAL

BORYUNG Pharmaceutical

Ethical (Rx), Respiratory, Cardiovascular, Antibiotics, Dialysis, etc.
(Revenue USD 400 million)

BORYUNG Biopharma

Specializing in Biotechnology, Vaccines, Umbilical cord blood, etc.

BORYUNG Medience

“Everything for Mom & Baby”
Products include Nursery, Skincare, Apparel, Foods, etc.

BORYUNG MEDIENCE

HEALTHCARE

BORYUNG Consumer Healthcare

OTC products, Medicines for digestive, Health functional food,
Cosmetic products

BORYUNG A&D Medical

Healthcare equipment, preventative medicines

BUSINESS Support

BORYUNG Holdings (Group Support)
BORYUNG Inc. (Real estate Management)
Kim's Comm (Media Communication)
BR Netcomm (IT Infrastructure)

SYNERGY



BORYUNG PHARMACEUTICAL CO., LTD.

PROFILE

BORYUNG PHARMACEUTICAL CO. LTD.

Established
in
1963

CAPITAL

200 Million US dollars ⁽¹⁾

Headquartered
in
SEOUL
Korea

ORGANIZATION

Fully integrated
pharmaceutical company

In-house R&D
In-license development & distribution
Manufacturing
Sales & marketing

About
1250
employees

Sales & MKT
550
employees

(1) Capital value: 2018 4Q, 1,100.10 KRW/USD

PRESENCES

CHINA

BORYUNG PHARM. CHINA
Beijing, China

KOREA

HEADQUARTERS
Jongro-gu, Seoul

**CENTRAL RESEARCH LAB. & MAIN
MANUFACTURING FACTORY**
Ansan

YESAN FACTORY
Manufacturing will be started in 3Q, 2019

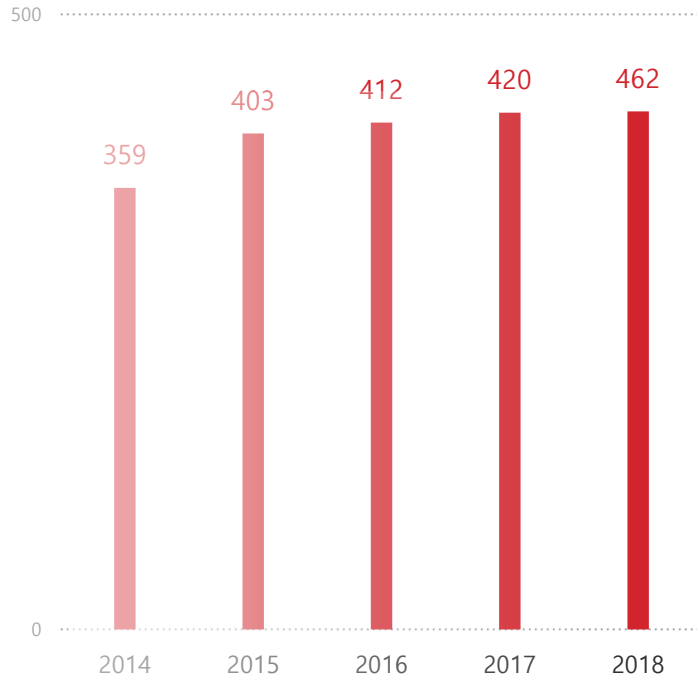
BIO/VACCINE FACTORY
Jincheon

SALES PERFORMANCE

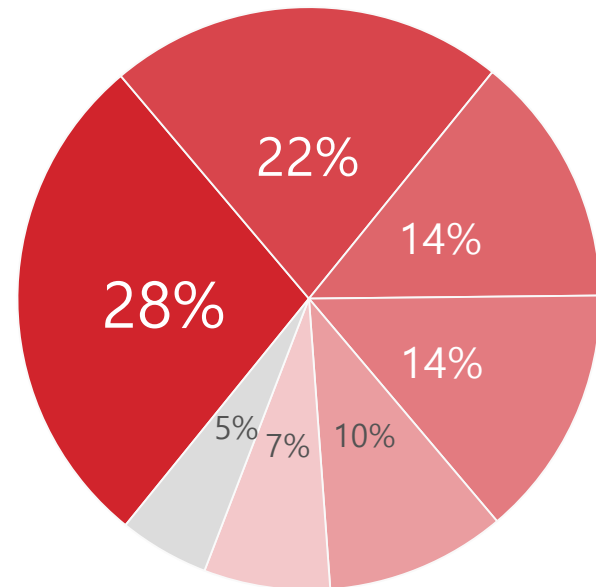
PERFORMANCE

SALES BREAKDOWN

■ CAGR = 4 %



- ANTI-INFECTIVE
- CARDIOVASCULAR SYSTEM
- ONCOLOGY
- OTC
- CMO
- NEPHRO
- OTHERS



(Currency : Mil. USD)

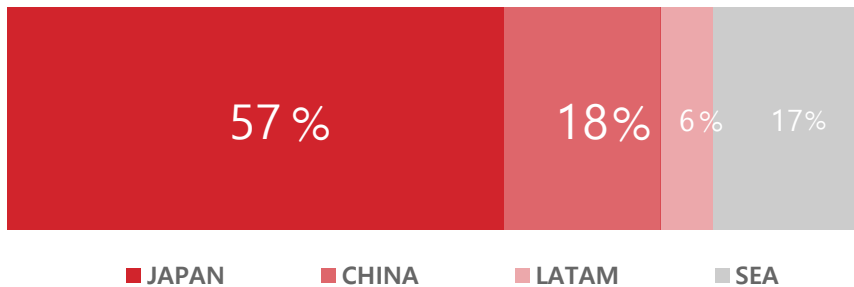
*Reference: 2016 Internal sales data

GLOBAL SALES PERFORMANCE

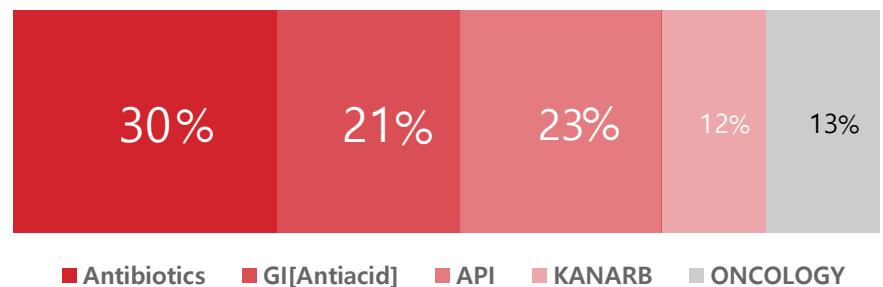
OVERSEAS SALES 2018

USD 20,000,000

TERRITORIES

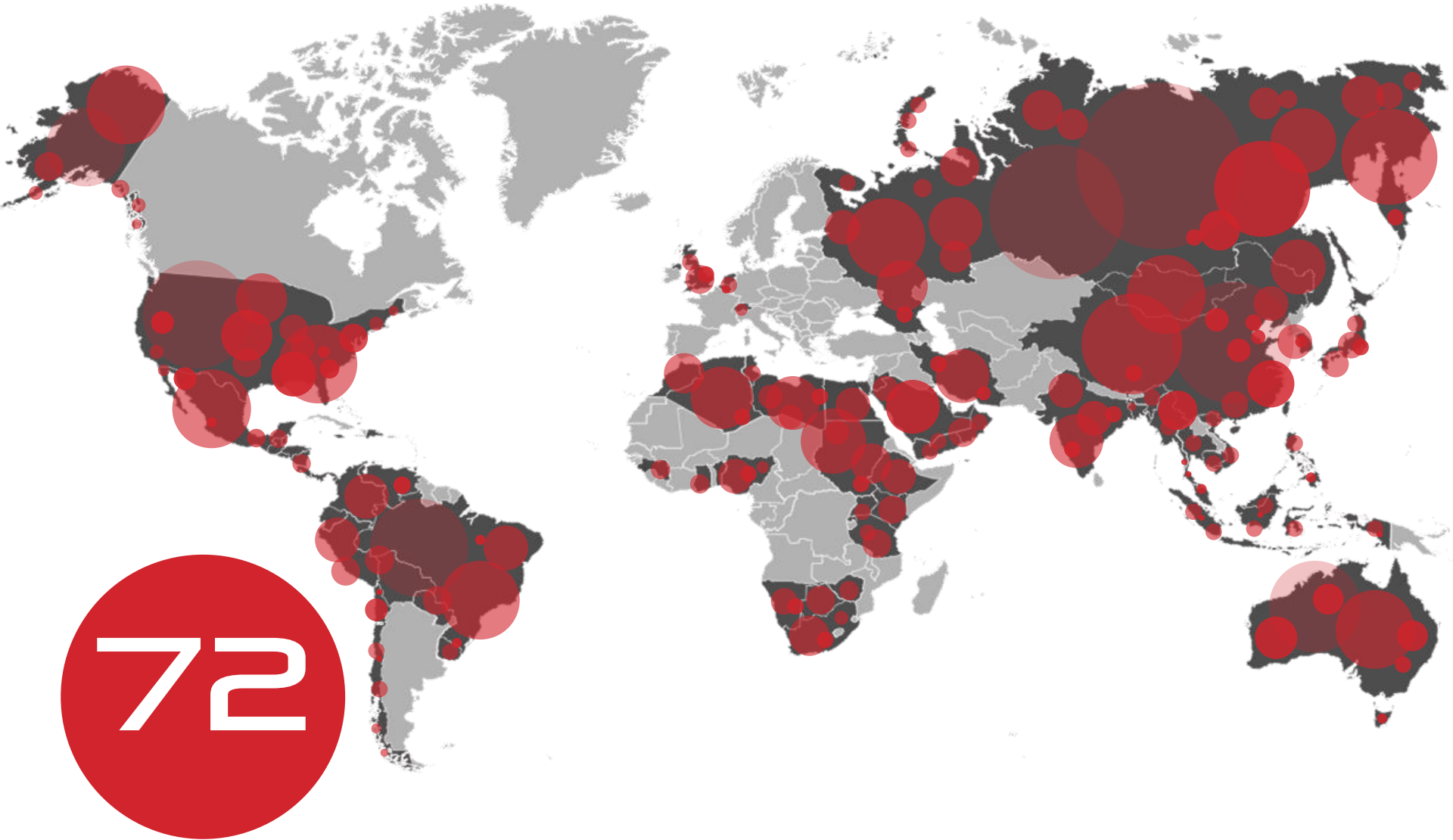


PRODUCTS



*Reference: 2016 Internal sales data & IMS, 2016

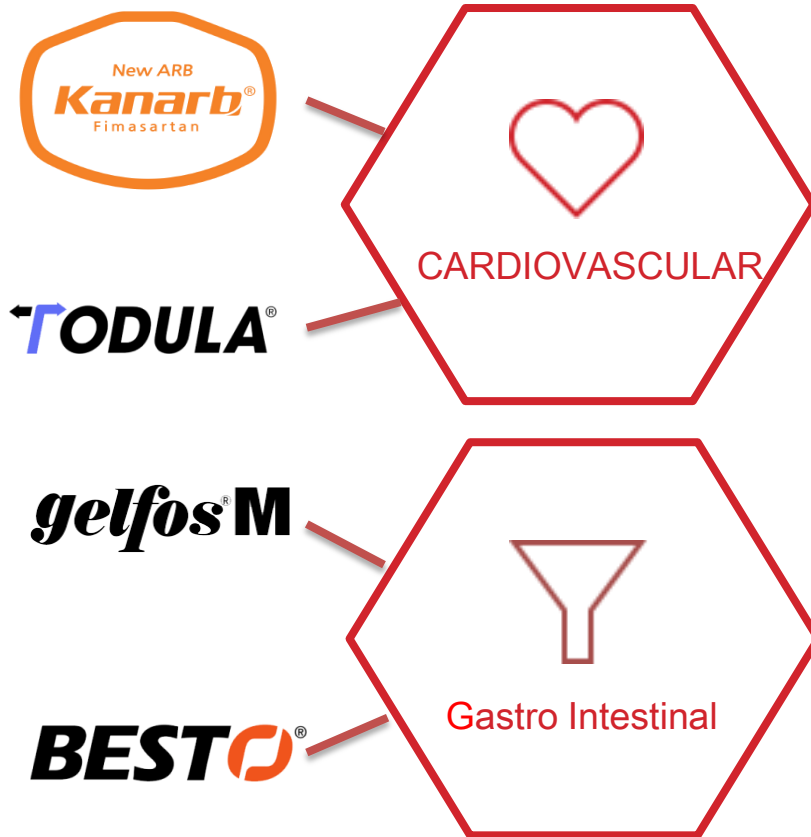
GLOBAL TERRITORIES





PRODUCTS

ORIGINALS

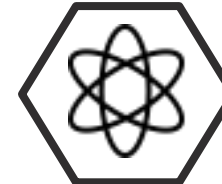
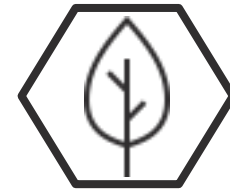


GENERICS

ANTI-INFECTION
& VACCINE



RESPIRATORY



ANTINEOPLASTIC



1

No.1 ARB product in Korea
(USD 62 Million - 2018 4Q IMS)

4

Kanarb Family Product

- ① Kanarb
- ② Kanarb Plus (+HCTZ)
- ③ Dukarb (+AML)
- ④ Tuvero (+RSV)

51

Licensing-out in 51 countries

Indication

- Essential Hypertension

Active Pharmaceutical Ingredient

- Fimasartan potassium tri-hydrate

37,473

Phase IV study is
widely performing

gelfos[®]M

Asia's No.1 Fast Acting Gastric Antacid



1

#1, TOP gastric antacid product in China, Korea and Taiwan

40

Maintained best selling gastric antacid product in Korea for 40 years

70

Captured 70% of gastric antacid market in Taiwan

Indication

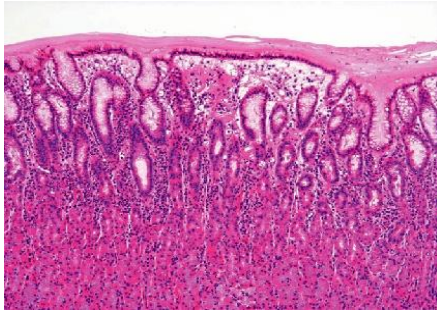
- Gastric hyperacidity (including Gastritis, Gastroduodenal ulcer)

Active Pharmaceutical Ingredient

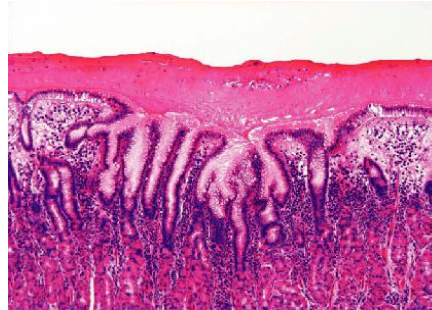
- Colloidal Aluminum Phosphate
- Magnesium Hydroxide
- Simethicone

UNIQUE H2RA DRUG WITH GASTROPROTECTIVE EFFECTS

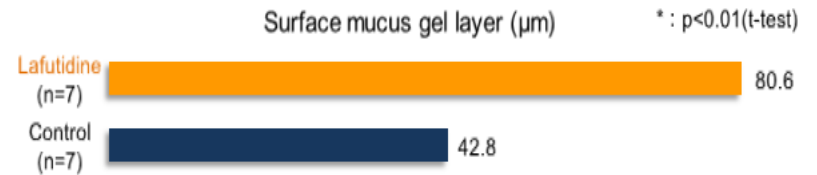
Control



Lafutidine



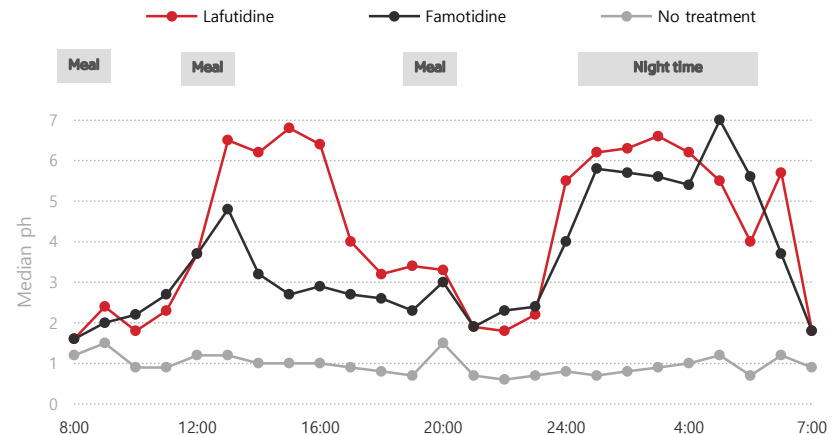
▼ Strengthen gastric mucus layer



Dual Action H² Receptor Antagonist
 Antisecretory Effect + Gastro protective Effect
 Lafutidine [C.H.N.OS] | 10mg | Filmcoated tablet | In house spec. | QD | CTD format



SUPERIOR PERFORMANCE THAN FAMOTIDINE



*CGRP : Calcitonin Gene Related Peptide

^{*Ref.}
 1) Nippon Yakurigaku Zasshi 1995, 105, 231-41 2) Fukushima Y, et al: Digestion 64, 155(2001)



DUAL L/N-TYPE CCB (CA₂⁺ CHANNEL BLOCKER)

Todula is a unique Ca₂⁺ channel blocker with an inhibitory action on the sympathetic N-type Ca₂⁺ channels.

COMPARABLE BP LOWERING EFFECT VS AMLODIPINE

Todula shows comparable effect in systolic and diastolic blood pressure compared with amlodipine

TODULA®



4th Generation Dual Calcium Channel Blocker

Cilnidipine(C₂₇H₂₈N₂O₇) | 10mg | Film-coated tablet | In house spec | QD | CTD format

RENOPROTECTIVE EFFECT

Todula reduces glomerular pressure and AER(Albumin Excretion Rate) by dilation of both afferent and efferent arteriole

MINIMIZING FOR REFLEX TACHYCARDIA AND ANKLE EDEMA

Todula® treatment achieved a significantly greater decrease in PR(Pulse Rate) than Amlodipine treatment in hypertensive patients. Sympathetic inhibitory action of Cilnidipine may not caused increasing the PR. Todula also showed complete clinical resolution of ankle edema in all patients after 1 month reassessment.

Region : 19 countries in MENA

Partner : Ram pharma
Progress : License contract completed

Region : Mexico

Progress : Business proposal

Region : CIS

Progress : Business proposal

Region : China

Progress : Business proposal

– LICENSING PROGRESS –

As of March 2017

TOTAL PRODUCT LIST

FDF

Therapeutic Area	Cardiovascular	Antibiotics	Antineoplastic	Gastro – intestinal	Amino acids	Others
Marketed	<ul style="list-style-type: none"> •Fimasartan •Fimasartan+HCTz •Fimasartan+Amlodipine •Fimasartan+Rosuvastatin •Captopril •Cilnidipine 	<ul style="list-style-type: none"> •Amoxicillin+Clav. •Cefaclor •Cefoperazone +Sulbactam •Cefotiam •Ceftriaxone •Ceftazidime 	<ul style="list-style-type: none"> •Bortezomib+Manitol •Carboplatin •Doxorubicin •Epirubicin •Erlotinib •Gemcitabine •Imatinib •Irinotecan •Methotrexate sod. •Oxaliplatin •Vincristine •5-Fluorouracil 	<ul style="list-style-type: none"> •Collidal ALPO4 gel •Lafutidine 	<ul style="list-style-type: none"> •Hekmin •Levotaxol •Parentamin •Uropass 	<ul style="list-style-type: none"> •Cold Three (Cold drug)
Under development	<ul style="list-style-type: none"> •Fimasartan+CCB+Statin 					

API

Therapeutic Area	Cardiovascular	Antibiotics	Antineoplastic	Respiratory	Urology	Nervous system	Others
Marketed	<ul style="list-style-type: none"> •Alacepril •Fimasartan •Pitavastatin Ca 	<ul style="list-style-type: none"> •Linezoid 		<ul style="list-style-type: none"> •Montelukast Sod. •Fexofenadine HCl 	<ul style="list-style-type: none"> •Tamsulocin HCl 	<ul style="list-style-type: none"> •Sertraline HCl 	<ul style="list-style-type: none"> •Aripiprazole
Under development	<ul style="list-style-type: none"> •Ticagelor •Cilnidipine 		<ul style="list-style-type: none"> •Dasatinib 				<ul style="list-style-type: none"> •Cinacalcet HCl •Donepezil

KANARB VALUE-UP PIPELINE

Classification	Project	Indication	Discovery	Pre-Clinical	Phase 1	Phase 2	Phase 3
IMD	BR1006	Hypertension / Dyslipidemia	██████████	██████████	██████████	██████████	██████████
	BR1007	Hypertension / Chronic kidney	██████████	██████████	██████████	██████████	██████████
	BR1008	Hypertension / Dyslipidemia	██████████	██████████	██████████	██████████	██████████
	BR1009	Hypertension / Diabetes	██████████	██████████			
	BR1010	Hypertension	██████████	██████████	██████████		

PIPELINE

Classification	Project	Indication	Discovery	Pre-Clinical	Phase 1	Phase 2	Phase 3
NCE	BR2002	Lymphoma	██████████	██████████			
	BR3001	Diabetes	██████████				
NBE	BR2001	Liver cancer (Gene therapy)	██████████	██████████	██████████		
IMD	BR4001	Alzheimer's disease	██████████	██████████	██████████		
	BR4002	Alzheimer's disease (Microstructure)	██████████	██████████			
Vaccine	BR8002	Dtap-IPV	██████████	██████████	██████████	██████████	██████████
	BR8003	Hepatitis A	██████████	██████████	██████████	██████████	██████████